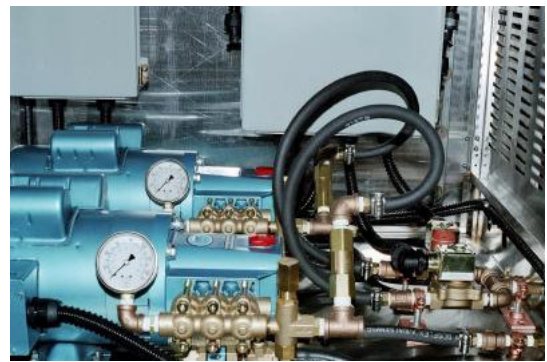
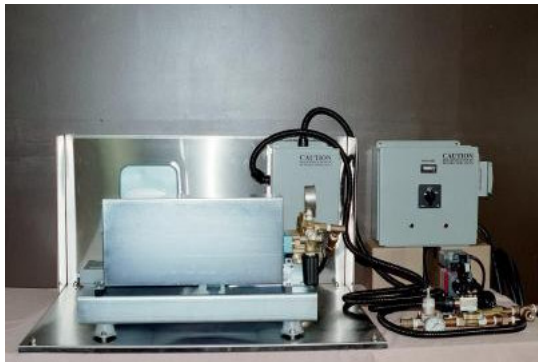


BryCoSystems

- **Odor Control**
- **Dust Suppression**
- **Humidification**
- **Misting**

BryCoSystems manufactures a complete line of design build High Pressure Odor Control, Dust Suppression Humidification and Misting Systems to meet the most difficult of applications. Unlike many other companies, offering only a hand full of systems to choose from, we listen very carefully to your needs and build a system based on your specific situation. The results...over 700 unique possibilities. Since our first system built in 1993, we have assisted many companies, large and small, as well as government agencies with their odor control and dust suppression needs. With our vast selection of high quality, state-of-the-art components, you can rest assured that your system will be carefully designed and built to match your application. Call us today to discuss your application requirements.



Open or Closed Cabinet - Belt Driven or Direct Drive - Single or Dual Pumps

Trash Transfer Stations: The operators of Trash Transfer Stations continuously face the challenge of not only odor control, but dust suppression as well. The more tipping that is done the more odors and often dust, that is generated. BryCoSystems has the ability and track record to help you keep your odor and dust suppression problems under control. Proper odor control brings with it many benefits, such as a healthier and safer work environment for your employees, good community relations and much more. In addition, an average BryCoSystems odor control unit will delivery over 2,000,000 BTU's of evaporative cooling per hour, to benefit your facility and employees during the warmer months of the year. Whether you are considering an odor control system due to a governmental requirement or simply because you know it is the right step to take, please give us a call.

Construction and Demolition (C&D) Facilities: The issue faced by C&D Recycling Facilities is clearly dust. Installing a BryCoSystems dust suppression unit, will enable you to bring dust control to not only your facility in general, but to key dust generation points within. The process of tipping in itself can be a major contributor to your dust control needs. However, the processing of materials after they have been tipped is often the biggest issue, such as screening, grinding and shredding. Dust suppression, when installed in key and strategic locations can lead to a safer and healthier environment.



Brass and Stainless Steel Nozzles



Liquid Metering Pump



Enclosed Cabinet Control Section

Open Cabinet Odor Control and Dust Suppression Systems - Standard Features:

- Constructed using UL/ETL Agency Listed Components.
- Stainless Steel Cabinet - Base Plate with Back Panel.
- System Controls Include: System On/Off Switch, Run Time Meter, System On/Off Timer, Green System On Indicator Light, Red Blow Down Indicator Light, Freez-Pro® System Blow Down Timer, Control Voltage Transformer, Fuses and Relays housed in a Hinged 12"x12"x6" NEMA Enclosure.
- Liquid Metering Pump (**odor control applications only**).
- Freez-Pro® System Blow Down Solenoid Valve, 24 VAC Coil - 3/8" NPT.
- Freez-Pro® System Blow Down High Pressure Check Valve.
- Inlet Water Pressure Regulator - 1/2" NPT.
- Inlet Water Pressure Gauge.
- Inlet Water Solenoid Valve with 24 VAC Coil - 1/2" NPT.
- I.E.C. Style Motor Starter and Overload Relay housed in Hinged NEMA Enclosure.
- 24 VAC Fused Control Voltage.
- Vibration Isolators on Cabinet Base Plate and Motor.
- Triplex Pump/Motor, **Pulley's, Belt, Belt Guard (belt driven units only)**, Pressure Gauge, Bypass, Thermal Overload, Regulator and Oil Drain – 1/2" NPT Inlet, 3/8" NPT Discharge.
- Voltage: 120/1/60 - 480/3/60, depending on Pump/Motor. 50Hz is also available upon request.

All Wiring Properly Sized, Numbered and Housed in Hubbell Water Tight Flex.

Closed Cabinet Odor Control and Dust Suppression Systems - Standard Features:

- Constructed using UL/ETL Agency Listed Components.
- Stainless Steel cabinet with locking control compartment, removable sides and top.
- System Controls Include: System On/Off Switch, Run Time Meter, System On/Off Timer, Green System On Indicator Light, Red Blow Down Indicator Light, Freez-Pro® System Blow Down Timer, Control Voltage Transformer, Fuses and Relays housed in a door control compartment.
- Liquid Metering Pump (**odor control applications only**).
- Freez-Pro® System Blow Down Solenoid Valve, 24 VAC Coil - 3/8" NPT.
- Freez-Pro® System Blow Down High Pressure Check Valve.
- Inlet Water Pressure Regulator - 1/2" NPT.
- Inlet Water Pressure Gauge.
- Inlet Water Solenoid Valve with 24 VAC Coil - 1/2" NPT.
- I.E.C. Style Motor Starter and Overload Relay housed in Hinged NEMA Enclosure.
- 24 VAC Fused Control Voltage.
- Vibration Isolators on Cabinet Base Plate and Motor.
- Triplex Pump/Motor, **Pulley's, Belt, Belt Guard (belt driven units only)**, Pressure Gauge, Bypass, Thermal Overload, Regulator and Oil Drain – 1/2" NPT Inlet, 3/8" NPT Discharge.
- Voltage: 120/1/60 - 480/3/60, depending on Pump/Motor. 50Hz is also available upon request.

All Wiring Properly Sized, Numbered and Housed in Hubbell Water Tight Flex.



Bryant Companies

252 Grange Hall Road • Dalton, MA 01226
Toll Free: 1-800-772-7926 Fax: 413-684-3206
www.brycosystems.com