



## Herrtronic® 6000 Series

## Self-Generating Electronic Steam Humidifier

# The Ultimate Humidification Solution

**H**errmidifier's Herrtronic® 6000 Series Self-generating Electronic Steam Humidifiers combine the purity of steam humidification with the precision of electronic monitoring and control. Exclusive circuitry continuously monitors the mineral content of water to provide optimum performance and trouble-free operation for applications where high capacity or precise environmental control are required.

The 6000 Series is available in a ducted version complete with humidistat, distributor and steam hose, or as a self-contained blower package for distribution of steam right into the space. Controls are on/off and included in either package.

The 6000-2 (pictured right) has a maximum output of 8 lbs/hr (3.6 kg/hr), runs on 208-230 VAC single-phase power and is UL, CE and CSA listed. All 6000 Series units can be packaged to meet the requirements of many different application configurations and come complete with all components needed for installation.



*The wall-mounted 6000 Series offers a self-contained compact package for smaller applications.*

### Features & Benefits

- The purity of steam humidification
- UL/CE/CSA certified
- Built-in blower & humidistat (6000-1, 6000-2)
- Remote steam pipe & controls (6000-3, 6000-4)
- Power & service panel indicators
- Attractive, neutral finish
- Hidden pipe & wire routing
- Easy maintenance & steam cylinder replacement
- 2-year warranty (excludes replaceable steam cylinder)

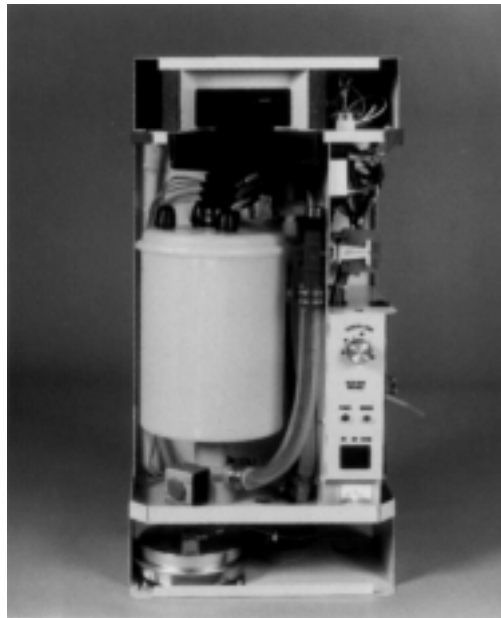




### Unit Specifications

Model number	6000-1	6000-2	6000-3	6000-4
Max. Humidification Capacity	4 lbs/hr or 11.5 gpd (1.8 kg/hr)	8 lbs/hr or 23 gpd (3.6 kg/hr)	4 lbs/hr or 11.5 gpd (1.8 kg/hr)	8 lbs/hr or 23 gpd (3.6 kg/hr)
Distribution Method	Built-in Blower	Built-in Blower	Remote Steam Pipe	Remote Steam Pipe
Humidistat	Built-in	Built-in	Control & Limit	Control & Limit
Differential Pressure Switch	Built-in	Built-in	Remote	Remote
Steam Plume Length	3* (0.9m)*	5* (1.5m)*	N/A	N/A
Voltage	115 VAC	208/230 VAC	115 VAC	208/230 VAC
Phase	Single	Single	Single	Single
Cycle	50/60 Hz	50/60 Hz	50/60 Hz	50/60 Hz
Max. Operating Amperage	11.5 Amps	11.5 Amps	11.5 Amps	11.5 Amps
Power Consumption	1.33 Kw	2.66 Kw	1.33 Kw	2.66 Kw
Required Circuit	15 Amps	15 Amps	15 Amps	15 Amps
Shipping Weight	28 lbs (12.7kg)	28 lbs (12.7 kg)	40 lbs (18 kg)	40 lbs (18 kg)
Cabinet Dimensions	22" (H) x 11" (W) x 7 1/4" (D) (559mm (H) x 279mm(W) x 184mm(D))			

\* Plume length measured at an average of 70° F (21° C) and 30% humidity



The Herrtronic® 6000 Series features a cleanly designed, neutral-colored cabinet, which allows pipe and wire routing to be concealed. The easy-access cover makes maintenance and steam cylinder replacement a snap.

### Applications

- Computer Rooms
- Laboratories
- Cleanrooms
- Offices
- Large Homes
- Paper Storage & Handling
- Clinics/Medical Offices
- Resort Homes & Condos



A FEDERAL ENGINEERED PRODUCTS COMPANY

Corporate Office: 101 McNeill Road · Sanford, NC 27330  
Phone: 800-884-0002 · Fax: 800-458-2379 · www.herrmidifier.com · email: herrsales@trioninc.com

UK Office: Trion Ltd. · Reith Way · West Portway Industrial Estate  
Andover, Hampshire SP10 3TY, UK  
Phone: +44 (0) 1264 364622 · Fax: +44 (0) 1264 350983 · www.trion.co.uk · email: info@trion.co.uk

